



3 Bed House - Detached

5 Mint Grove
Mickleover
Derby
DE3 0GE

£1,600 Per Month

Fletcher
& Company

5 Mint Grove Derby DE3 0GE



- Sought After Area of Hackwood Park
- Master Bedroom with Ensuite
- South Facing Private Rear Garden
- Gas Central Heating
- White Goods Included
- Close to A38 and A516- Easy Commuter Access
- Open Plan Kitchen/Dining Room
- Easy Access to Open Countryside
- Available End of June 2026
- Off Street Parking for Up to Three Vehicles

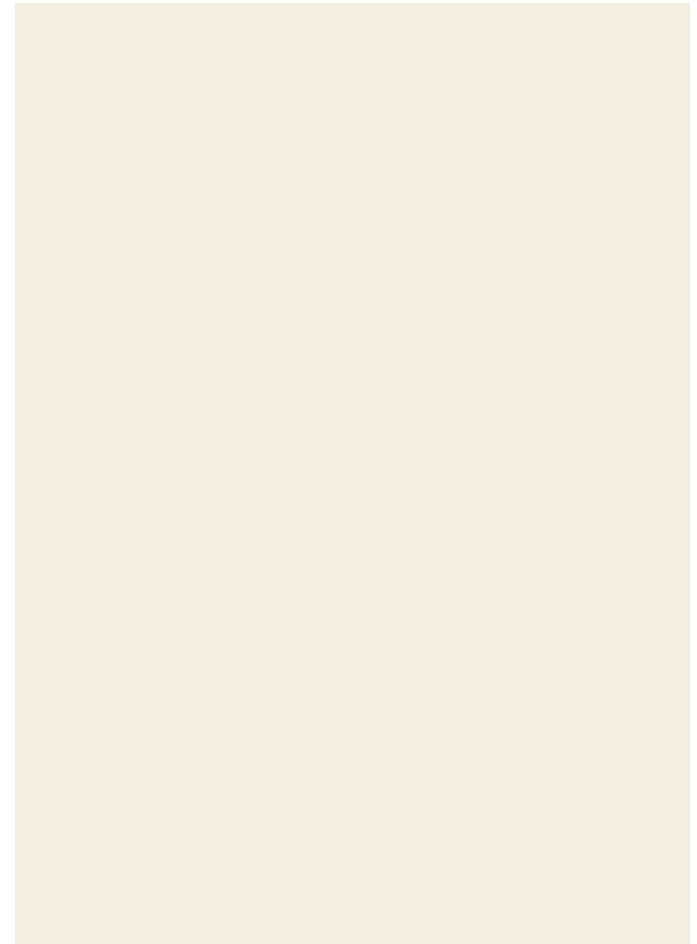
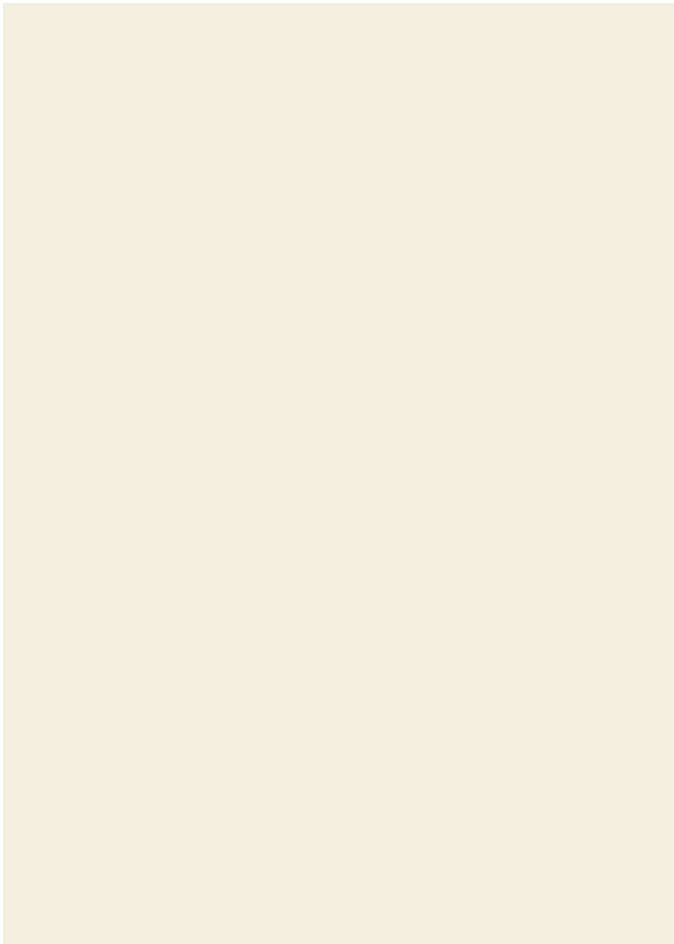
Fletcher and Company are pleased to offer this well-presented three bedroom detached home on the sought-after Hackwood Park development.

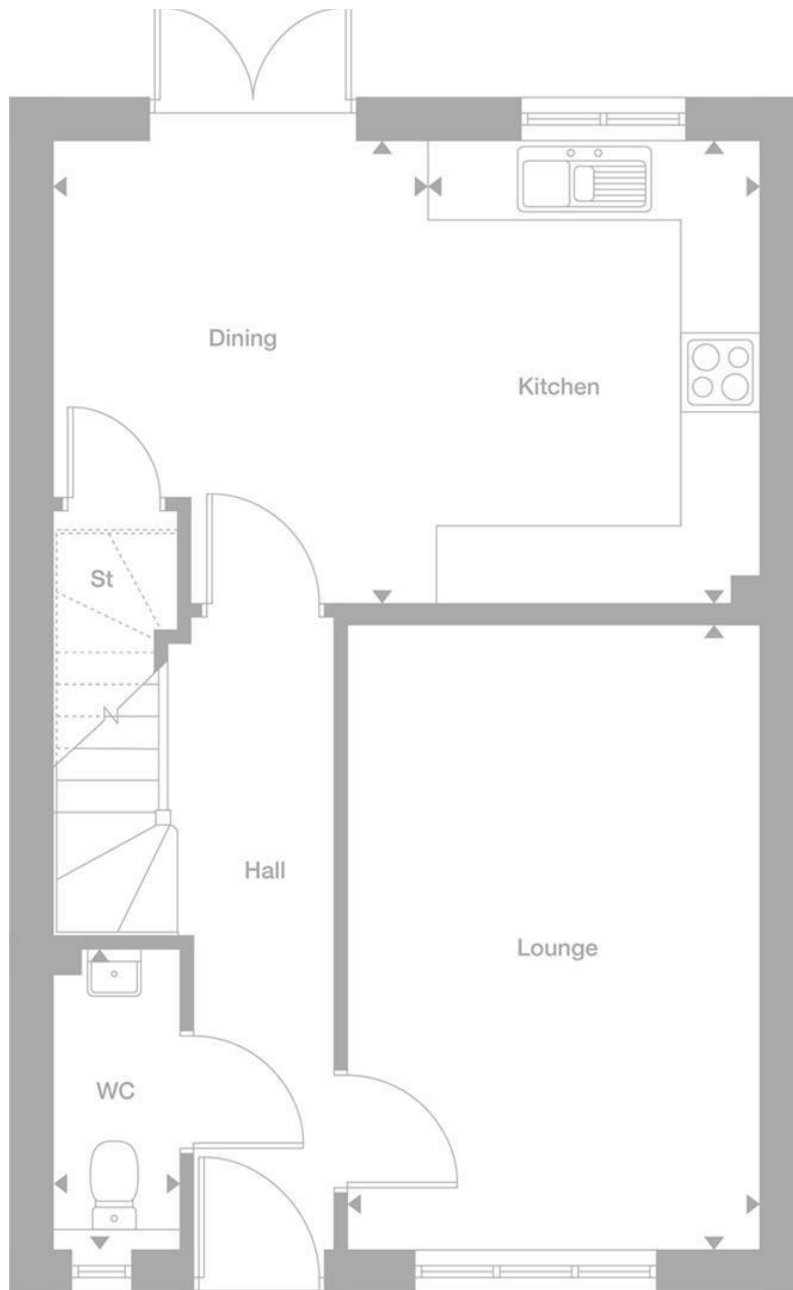
The property benefits from a bright lounge, downstairs WC, and an open plan kitchen/dining room with French doors leading to the rear garden, ideal for families or professional couples looking for a modern, spacious home. Upstairs you have three bedrooms including a generous master with en suite, alongside a separate family bathroom.

Finished to a premium specification throughout, the property also benefits from gas central heating, included white goods and a fitted wardrobe in the master bedroom.

Hackwood Park is a popular residential development with excellent local amenities close by, including Hackwood Primary Academy and a nearby supermarket. The A38 and A516 provide easy access to Derby city centre, Uttoxeter, Burton upon Trent, and the wider motorway network.



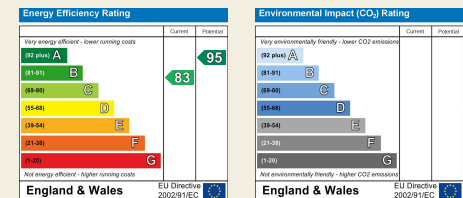




Duffield House
 Town Street
 Duffield
 Derbyshire
 DE56 4GD

T: 01332 843390

E: duffield@fletcherandcompany.co.uk
www.fletcherandcompany.co.uk



These particulars do not constitute an offer or a contract neither do they form part of an offer or contract. The vendor does not make or give and Messrs. Fletcher & Company nor any person employed has any authority to make or give any representation or warranty, written or oral, in relation to this property. Whilst we endeavour to make our sales details accurate and reliable, if there is any point which is of particular importance to you, please contact the office and we will be pleased to check the information for you, particularly if contemplating travelling some distance to view the property. None of the services or appliances to the property have been tested and any prospective purchasers should satisfy themselves as to their adequacy prior to committing themselves to purchase.

Fletcher
 & Company